



# FAR SIGHT

SERVING BEYOND SOLUTIONS

EXPANDED METAL MESH



AIR FILTERS



VIBRATION ISOLATORS

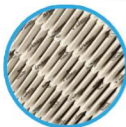


We provide  
**Solutions**  
with **Trust**

# FILTERS

## HEPA/MINI PLEAT

01



### HEPA & ULPA FILTERS

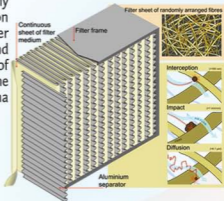
- High Efficiency Particulate Absorbing"
- Remove at least **99.97%** of dust, pollen, mold, bacteria airborne particles
- HEPA filters are last line of defense against highly hazardous aerosols such as radioactive, biohazardous and highly toxic. In the event of a nuclear, biological or chemical outbreak, they can even remove or reduce viral contamination.

HEPA class	retention (total)
E10	> 85 %
E11	> 95 %
E12	> 99.5 %
H13	> 99.95 %
H14	> 99.995 %
U15	> 99.9995 %
U16	> 99.99995 %
U17	> 99.999995 %

• HEPA air filters have been traditionally used in hospital operating and isolation rooms, pharmaceutical and computer chip manufacturing, air cleaners and filters are used in a wide variety of critical filtration applications in the nuclear, electronic, aerospace, pharmaceutical and medical fields.

#### Hepa specifications

1. High-efficiency,
2. Low resistance,
3. High dust holding capacity



### MINI PLEAT FILTERS

#### FILTER PANELS

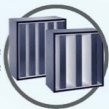
• Minipleat Filter cells are used as pre filters to separate fine dust or as high-efficiency filters to separate airborne particles, aerosols, toxic dusts viruses, germs, from the supply air and exhaust air.

#### FILTER CELLS

• The Minipleat panel filter has low pressure drop and high particle efficiency.

#### FILTER PANELS FOR CLEAN ROOM TECHNOLOGY

- For very demanding requirements of indoor air purity
- Reduction of energy costs due to a low initial differential pressure.
- Used for the most critical requirements of air purity and sterility in areas such as industry, research, medicine, pharmaceuticals, and engineering.
- Separation of suspended particles or aerosols, toxic dust, viruses, bacteria, and micro-organisms from supply or extract air in clean room plants with controlled air purity and air flow.



# FILTERS

## ALUMINIUM/BAG

01



### CARBON PLEATED FILTERS

- Designed to provide odor & particulate control where light to moderate odor conditions exist.
- Air filtration in all types of cooling, heating, Ventilating systems.
- Excellent prefilters to higher efficiency filters

### FILTER INSERTS

- Used as prefilters or final filters ventilation systems for high volume flow rates



### HIGH EFFICIENCY HEPA PANEL FILTER

- Lower energy consumption – greater than 40% lower resistance
- Ultra-high efficiency with lowest pressure drop
- Durability - highly resistant to corrosive environments (acids, alkalis, etc)
- High tensile strength media, more resistant to rough handling



### ALUMINIUM MESH FILTERS

- Built for exceptional performance
- Permanent aluminum filters have a large dust-holding capacity.
- Multiple layers of pleated aluminum capture more dirt, and lightweight construction makes these filters easy to handle, install, and clean.
- Used for general air filtration in any HVAC system as well as prefilters to higher efficiency filters.
- Suited for applications requiring permanent, washable or high temperature filters



### BAG FILTER/POCKET FILTER

- Galvanized iron or aluminum alloy frame Between each pocket.
- The separation material of each pocket can avoid the filter over expanded under the pressure
- Recommended for pharmaceutical, office complexes, hospitals, schools, food and processing, airports, paint booths, refineries, computer rooms, general commercial/industrial applications
- Temp. Resistance: 100 degree Celsius



### OTHERS

### FILTER MATS, ROLLS AND MANY MORE

\*Customizable according to customer's samples and drawing  
Comes in all sizes and shapes



FAR SIGHT  
SERVING BEYOND SOLUTIONS



Faryal Shah  
+92 3222771511



Contact us  
faryal@farsight.com.pk

# VIBRATION ISOLATORS

## SPRING BASED

02



### SPRING ISOLATORS

- Used to reduce the transmission of noise, shock, and vibration produced by mechanical, industrial or process equipment into or within a building structure.
- Typical Isolated Equipment includes: Pumps, Fans, Cooling Towers, Rooftop Units, Chillers, Boilers, Compressors

1. OPEN SPRING ISOLATORS
2. RESTRAINED SPRING ISOLATORS
3. HOUSED SPRING ISOLATORS
4. SPRING HANGERS



#### Open Spring/Unhoused Mounts

- Used to isolating mechanical equipment
- high deflection,unhoused, large diameter,stable steel springs
- Incorporate dual safety feaures of extra deep cups and extended bases, ensuring the highest level of stability.
- Supplied with completely stable steel spring.



#### Restrained Spring/Housed Mounts

- These isolators are fully captive and are typically used on chillers or generators that maybe drained for maintenance.
- By locking down the restraining bolts the isolated unit will maintain its location when the load is removed.
- Recommended where fluids forms a sginificant part of operating weight e.g cooling towers, boilers large centrifugal chillers etc.



#### Rubber/ Spring/ Mix hangers

- Reduce the transmission of vibration and noise from suspended mechanical equipment such as fans, pumps, air handling units, piping and ductwork.



### DEALS IN ALL TYPE OF SPRING ISOLATORS

\*Customizable according to customer's samples and drawing

\*Comes in all sizes and shapes



**FAR SIGHT**  
SERVING BEYOND SOLUTIONS



Faryal Shah  
+92 3222771511



Contact us  
faryal@farsight.com.pk

# VIBRATION ISOLATORS

## NEOPRENE

# 02



## NEOPRENE-IN-SHEAR MOUNTINGS

- Neoprene isolation mounts can be used to isolate noise and high frequency vibration generated by mechanical equipment located on a grade supported structural slab or pier.
- Color coded to identify capacity.
- Suitable for noise and vibration control in non critical applications.
- Load rating 18 to 1800Kg/mount, deflection 8mm to 13mm



### 1. SINGLE DEFLECTION SD

### 2. DOUBLE DEFLECTION DD

DD Neoprene Mounts are ideal for noise prevention. When you place neoprene isolators under equipment they run quieter and more reliably with less wear. Many times the noise control problem isn't the walls, ceiling or floors. It's the equipment.

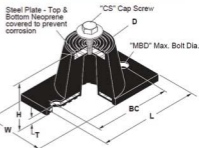


- designed for both high static deflections and simplified installation.
- The rubber is loaded in both shear and compression to provide rubber in shear performance as well as overload protection.
- Neoprene covering provides corrosion protection
- Perform best when placed under equipment located on ground support concrete slabs, above stiff support walls, columns and rigid upper building spans.



TYPE SD & DD NEOPRENE-IN-SHEAR MOUNTINGS																					
TYPE	MAX. LOAD EACH LBS.	DEFLECTION IN INCHES		APPR. WGT. KG.	DIMENSIONS IN MM																
		SD	DD		L	W	H	HD	A	B	C	D	E								
SD-1 OR DD-1	BLACK	45																			
	GREEN	120	0.20	0.40	150	99	61	25	31	45	$\frac{8}{1}$	75	9	8							
SD-2 OR DD-2	BLACK	170	0.25	0.50	220	108	65	32	47	47	$\frac{10}{1}$	82	11	9							
	GREEN	360																			
SD-3 OR DD-3	BLACK	250	0.25	0.50	450	138	87	44	66	63	$\frac{12}{1}$	104	14	14							
	GREEN	750																			
SD-4 OR DD-4	BLACK	1500	0.25	0.50	1.5	163	110	44	76	92	$\frac{13}{1}$	126	16	16							
	GREEN	3000																			
SD-5 OR DD-5	BLACK	2350	0.25	0.50	2.650	216	154	76	104	126	$\frac{15}{1}$	177	15	18							
	GREEN	2500																			

HD DIMENSION APPLIES TO DOUBLE DEFLECTION TYPE DD MOUNTING ONLY :



MANUFACTURED IN 5 SIZES  
5 DUROMETERS  
DEFLECTIONS

to 1/4 inch with SD type  
to 1/2 inch with DD type



## DEALS IN ALL TYPES OF NEOPRENE ISOLATORS

\*Customizable according to customer's samples and drawing

\*Comes in all sizes and shapes



FAR SIGHT  
SERVING BEYOND SOLUTIONS



Faryal Shah  
+92 3222771511



Contact us  
faryal@farsight.com.pk